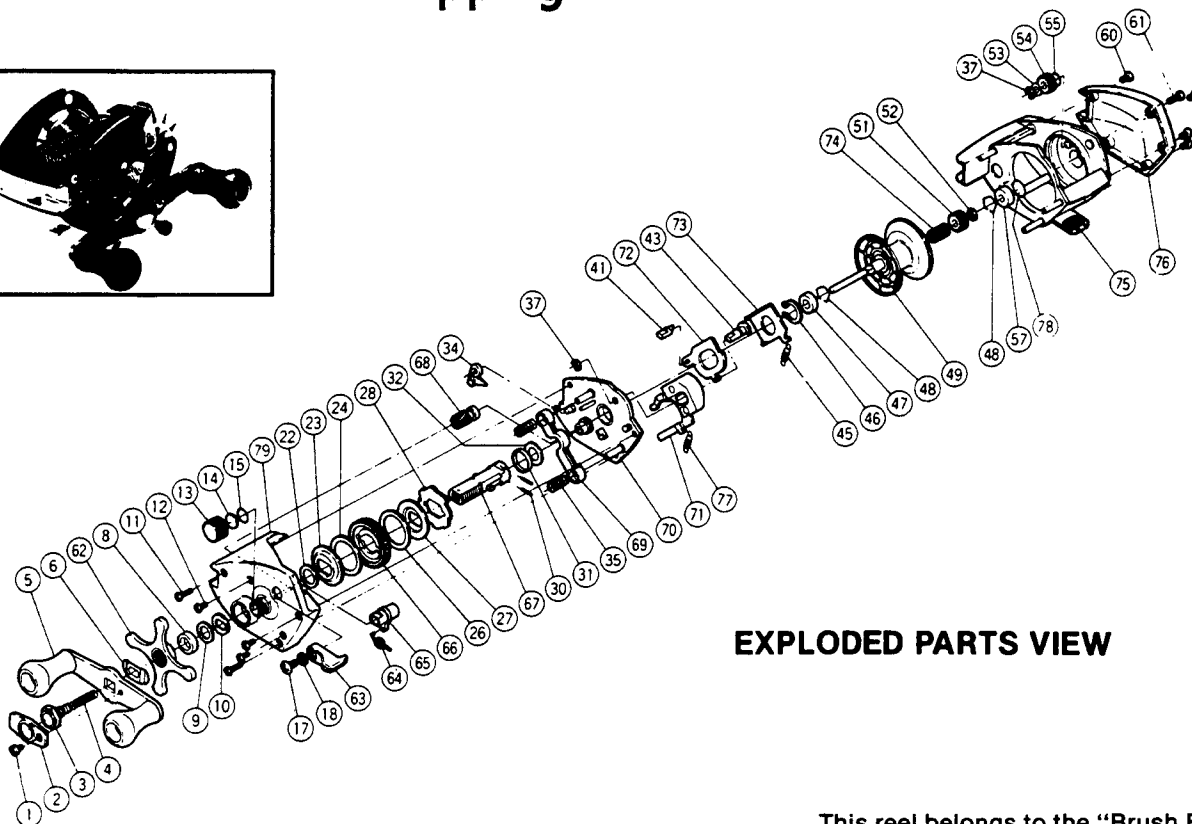
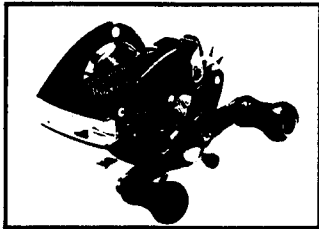


SHIMANO®

Brush Buster™ 11 Plus Flipping



EXPLODED PARTS VIEW

TO ORDER

This reel belongs to the "Brush Buster" series.
Please order parts using the abbreviation
"BB" and the part number. Code # is
for crossreference only.

PARTS LIST

PART #	CODE #	DESCRIPTION	PART #	CODE #	DESCRIPTION
1.	7-0014 301000	Handle Screw "B"	46.	7-0040 306000	Slide Plate Cover Lock
2.	7-2124 067100	Handle Screw Lock Plate	47.	7-1845 060400	Bushing "B"
3.	7-2123 060400	Handle Screw "A"	48.	7-1404 061000	Bearing Retainer
4.	7-2166 067100	Drive Shaft Spring	49.	7-1744 060400	Spool Assembly
5.	6-2129 067300	Handle Assembly	51.	7-1720 060400	Resistor Gear "A"
6.	7-2116 067100	Friction Washer "A"	52.	7-0040 304000	Resistor Gear "A" Lock
8.	7-2113 067100	Bushing "A"	53.	7-2101 061000	Thrust Washer Spacer (Optional)
9.	7-2111 067100	Friction Washer "B"	54.	7-1525 060400	Resistor Gear "B"
10.	7-2112 067100	Drag Spring Washer	55.	7-1434 060400	O Ring "B"
11.	7-0014 004000	Left Side Plate Screw	57.	7-1517 060400	Bushing "C"
12.	7-0013 005100	Set Plate Screw	60.	7-0013 002000	Right Side Plate Screw "A"
13.	7-2010 060400	Cast Control Cap	61.	7-0013 001000	Right Side Plate Screw "B"
14.	7-0020 005100	Cast Control Spacer	62.	6-2119 067400	Star Drag Assembly
15.	7-2005 060400	O Ring "A"	63.	7-2045 060800	Fightin' Lever
17.	7-0013 403110	Fightin' Lever Screw	64.	7-2046 060800	Joint Cam Yoke Spring
18.	7-0023 301100	Fightin' Lever Screw Washer	65.	7-2044 060800	Joint Cam Yoke
22.	7-2110 067100	Friction Washer "C"	66.	7-2106 060800	Drive Gear
23.	7-2108 060400	Key Washer "A"	67.	6-2109 060800	Drive Shaft
24.	7-2107 060400	Drag Washer	68.	6-1729 060800	Pinion Gear Assembly
26.	7-2143 060400	Drive Shaft Washer "B"	69.	7-1816 060800	Yoke
27.	7-2105 060400	Key Washer "B"	70.	6-1809 060800	Set Plate Assembly
28.	7-2103 060400	Anti-Reverse Ratchet	71.	6-1813 06080S	Clutch Button
30.	7-2167 067100	Drive Shaft Lock	72.	7-1891 060800	Slide Plate
31.	7-2167 060400	Drive Shaft Lock Ring	73.	7-1892 060800	Slide Plate Cover
32.	7-2158 067100	Drive Shaft Washer "A"	74.	7-1758 060800	Resistor Spring
34.	7-1824 100000	Anti-Reverse Pawl Assembly	75.	6-1509 060800	Frame Assembly
35.	7-1817 061000	Yoke Spring	76.	7-1401 060800	Right Side Plate
37.	7-0040 106000	Clutch Button Lock	77.	7-1821 060400	Retractor Spring
41.	7-1894 060400	Slide Cam	78.	7-1515 063700	Bearing Spacer
43.	7-1833 060400	Fightin' Lever Cam	79.	6-2019 060400	Left Side Plate Assembly
45.	7-1893 067100	Slide Plate Spring			